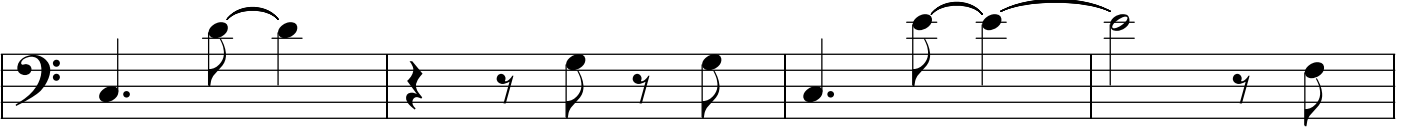


bass

# La nona, la quinta e la S.M.

F.Fabbrini



The image displays ten staves of musical notation for a bass clef instrument. Each staff contains a sequence of notes and rests, often grouped by slurs. The notation includes various rhythmic values such as quarter notes, eighth notes, and sixteenth notes. The first staff begins with a quarter note followed by a pair of eighth notes beamed together. The second staff features a quarter note, a pair of eighth notes, and a quarter rest. The third staff starts with a quarter note, a pair of eighth notes, and a quarter rest. The fourth staff begins with a quarter note, a pair of eighth notes, and a quarter rest. The fifth staff starts with a quarter note, a pair of eighth notes, and a quarter rest. The sixth staff begins with a quarter note, a pair of eighth notes, and a quarter rest. The seventh staff starts with a quarter note, a pair of eighth notes, and a quarter rest. The eighth staff begins with a quarter note, a pair of eighth notes, and a quarter rest. The ninth staff starts with a quarter note, a pair of eighth notes, and a quarter rest. The tenth staff begins with a quarter note, a pair of eighth notes, and a quarter rest.