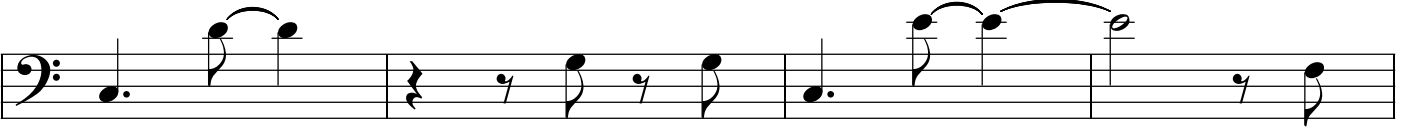


bass

La nona, la quinta e la S.M.

F.Fabbrini



The image displays ten staves of musical notation in bass clef. The notation is organized into two systems of five staves each. The first system (staves 1-5) is in a key signature of one flat (B-flat). The second system (staves 6-10) is in a key signature of two flats (B-flat and E-flat). The music consists of eighth and sixteenth notes, often beamed together in pairs or groups, with various rests and phrasing slurs. The notation is clean and professional, typical of a printed musical score.